

LA CANTINE

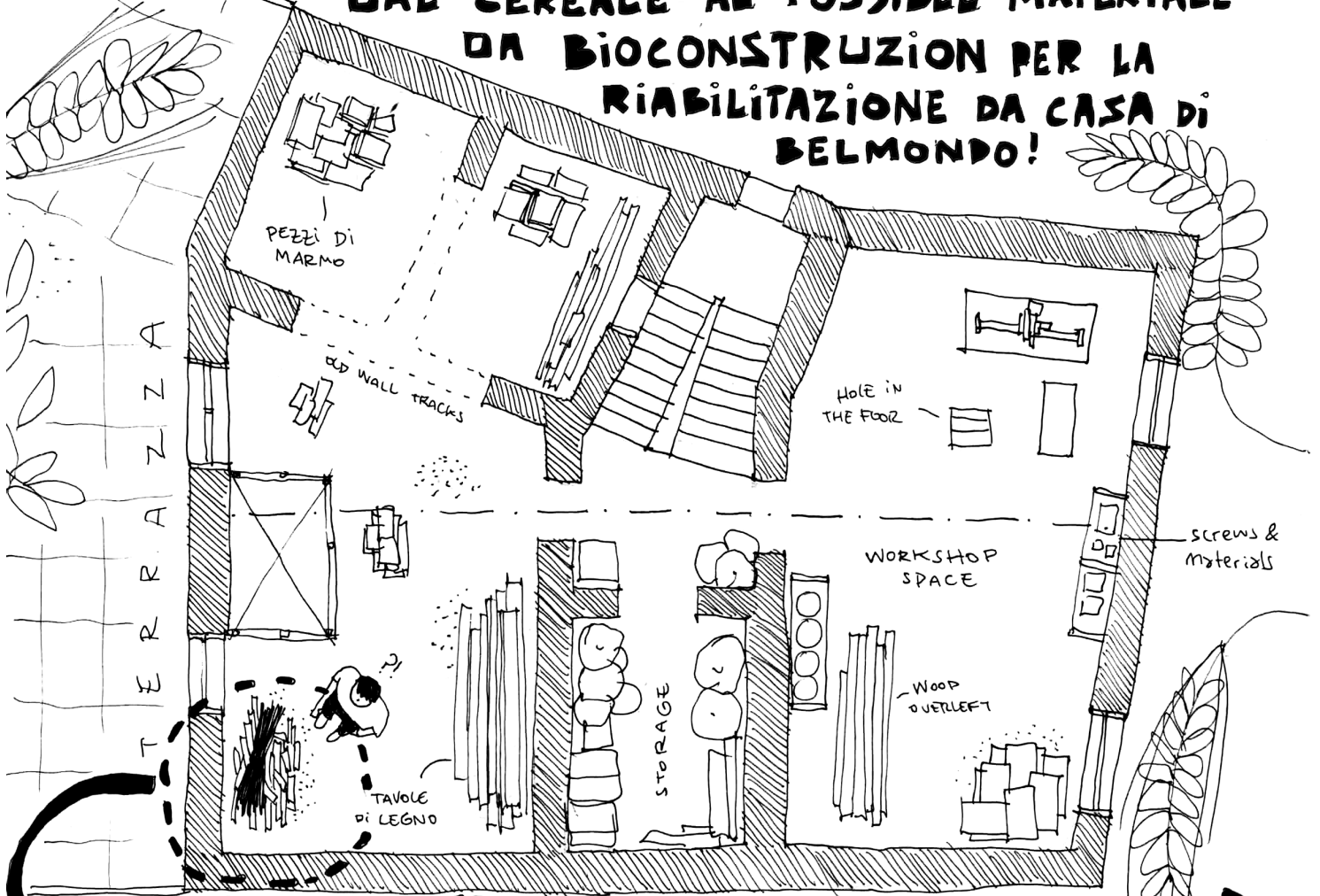


LE CANTINE ERANO NON SOLO UN EDIFICIO DI INCONTRO PER LA COMUNITÀ LOCALE MA ANCHE DELLE DIFFERENTI REALTÀ CHE CARATTERIZZANO BELMONTE. ERA IL LUOGO IN CUI IL MONDO DEL MARE E DELLA TERRA SI INCONTRAVANO ATTRAVERSO LA CUCINA E NELLE FESTIVITÀ E DOVE IL LAVORO E IL RIPOSO COESISTEVANO

EX CONVENTO

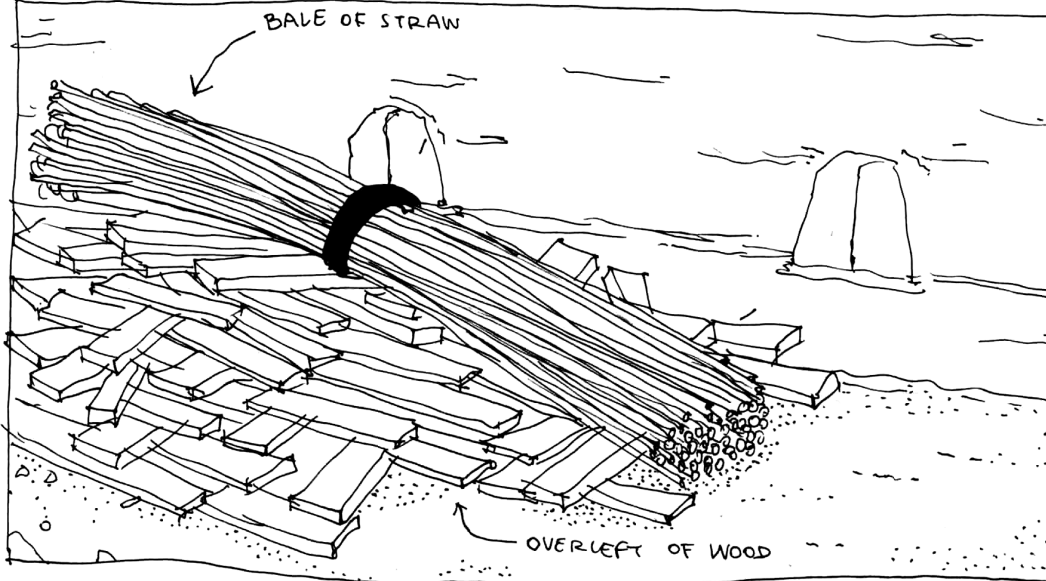
CASA DI BELMONDO,

UNA HISTORIA DELLA SEGALE,
 DAL CEREALE AL POSSIBILE MATERIALE
 DA BIOCONSTRUZION PER LA
 RIABILITAZIONE DA CASA DI
 BELMONDO!



ACTUAL SECOND FLOOR PLAN

UPSTAIRS MY ATTENTION WENT DIRECTLY TO ONE ORGANIC ELEMENT LAYING ON THE FLOOR, A BUNCH OF STRAW! SO I ASK MYSELF: IS IT LOCAL? AND IS IT A GOOD STARTING POINT TO SOLVE CONSTRUCTION DETAILS, WITH AN ECOLOGICAL PERSPECTIVE?



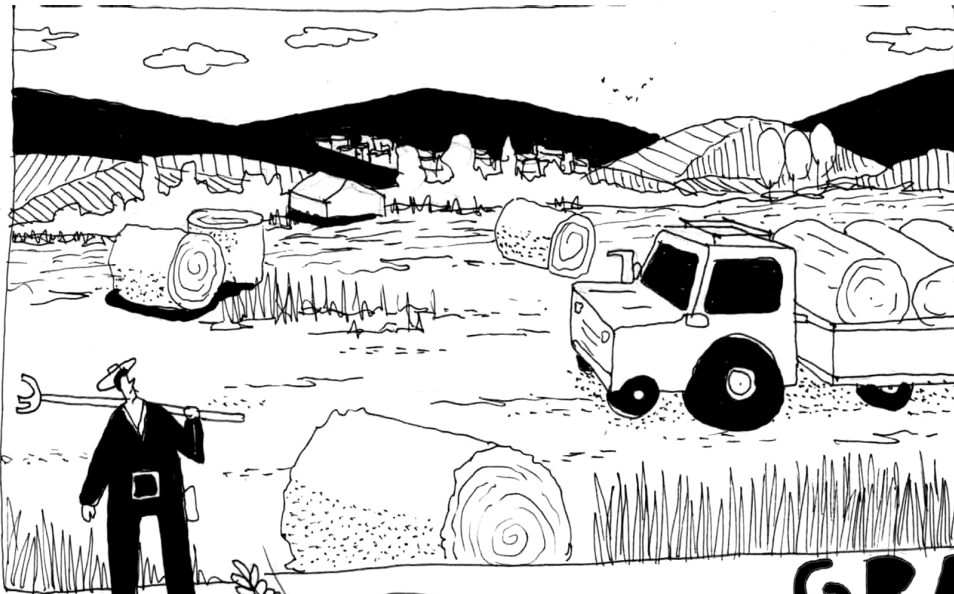
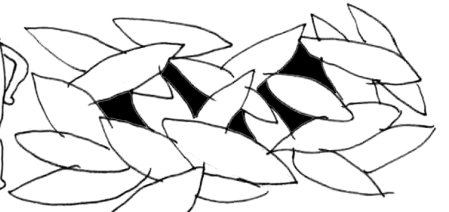
LA SEIGLE

A RESSOURCE FOR THE CALABRIA TERRITORY??

IRMANOU,
itmana,
iermanu,

GRANUIERMANIU

↳ "GERMANIA"



MIDDLE AGE

THE SEEDS TRAVEL ACCROSS EUROPE

IN CALABRIA, "RYE," HAS ADAPTED FOR CENTURIES TO ENVIRONMENTS OVER 750 METERS ABOVE THE SEA LEVEL WHERE ACCORDING TO TRADITION IT IS STILL CULTIVATED TODAY MAINLY IN THE TERRITORIES INCLUDED IN THE THREE CALABRIAN NATIONAL PARCS OF POLLINO, SILA & ASTROMONTE



750 meters MAXIMUM

DOWNTOWN

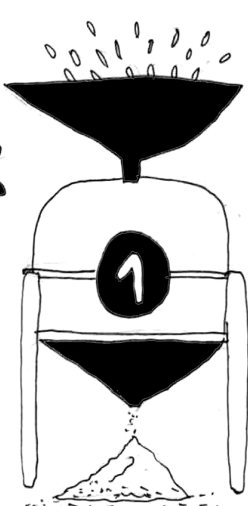
SEA

il borgo
le village
TO Xwpio

CALABRIAN NATIONAL PARCS

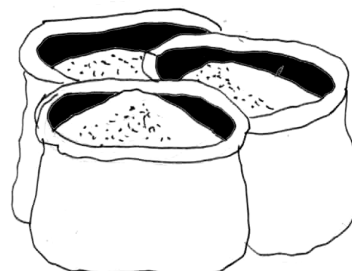


IN FRENCH WHEAT IS CALLED "LE BLE", WHICH FUNNYWISE MEANS ALSO MONEY IN THE SLANG.



TRAZNUPORRECTION

Rye FLOUR



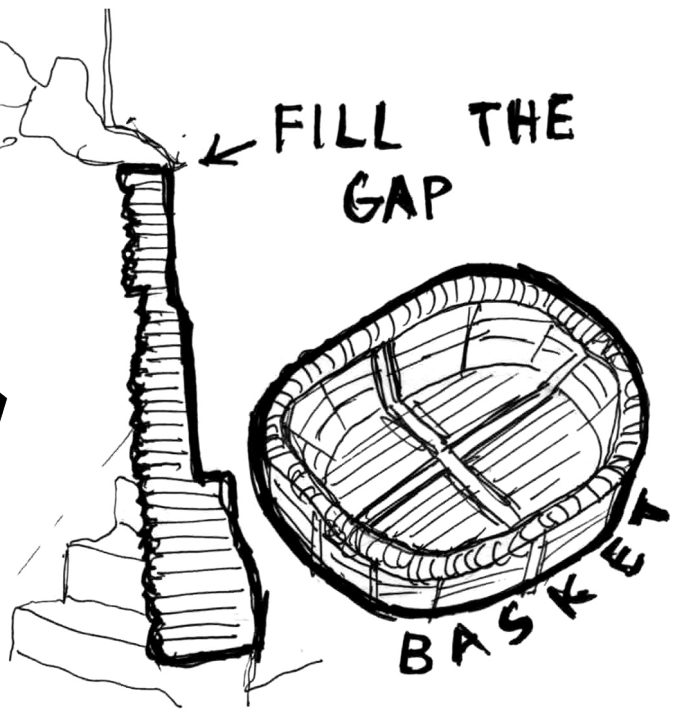
FARINA Di Segale

TRERNUORESTON

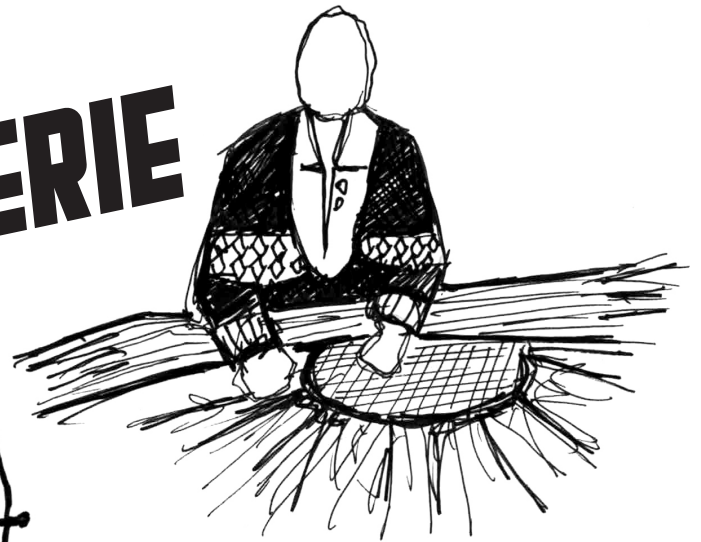


2

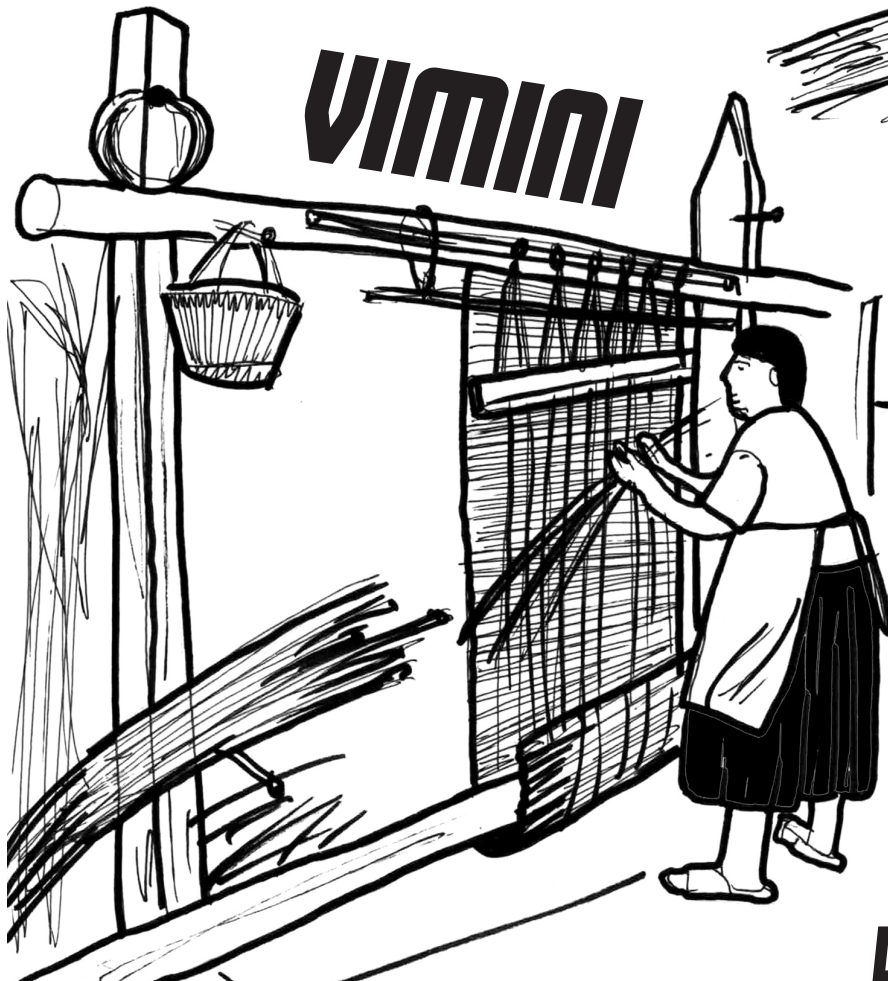




VANNERIE



VIMINI



**HAND MADE
MAT PROCESSING**

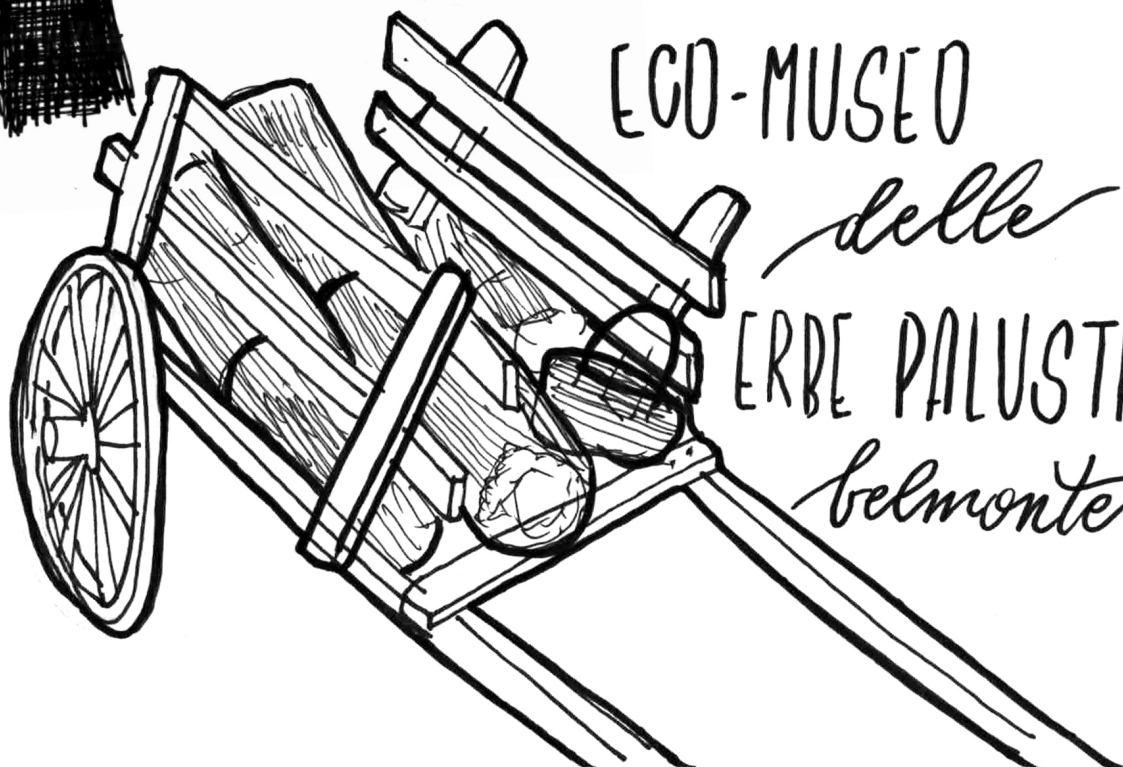
CANNA

**JUNGI ZIPARIALLO
LEGNO DI CASTAGNO
RUVETTE MUZI**

LISTUCCIO



LA CANNA PALUSTRE È UN MATERIALE CHE HA BUONE CAPACITÀ TERMOISOLANTI, È TRASPIRANTE, FAVORISCE LA DIFFUSIONE DEL VAPORE E SVOLGE FUNZIONE DI EQUILIBRIO IGROSCOPICO. QUEST'ULTIMA CARATTERISTICA VIENE MIGLIORATA CON UN INTONACATURA DI TERRA CRUDA. SI TRATTA DI UN MATERIALE RESISTENTE ALL'ATTACCO DEI RODITORI, ALLE MUFFE E ALLA PUTRESCENZA. HA BUONA RESISTENZA ALL'UMIDITÀ, ANCHE SE UN'ESPOSIZIONE DURATURA PUÒ CAUSARE FESSURAZIONI PERMANENTI CON LA RIDUZIONE DELLE CARATTERISTICHE MECCANICHE, RIGONFIAMENTI DELLA SUPERFICIE E POSSIBILI CONTAMINAZIONI DA BATTERI. IN AMBIENTE ASCIUTTO PRESENTA BUONA STABILITÀ DIMENSIONALE E DURATA NEL TEMPO.



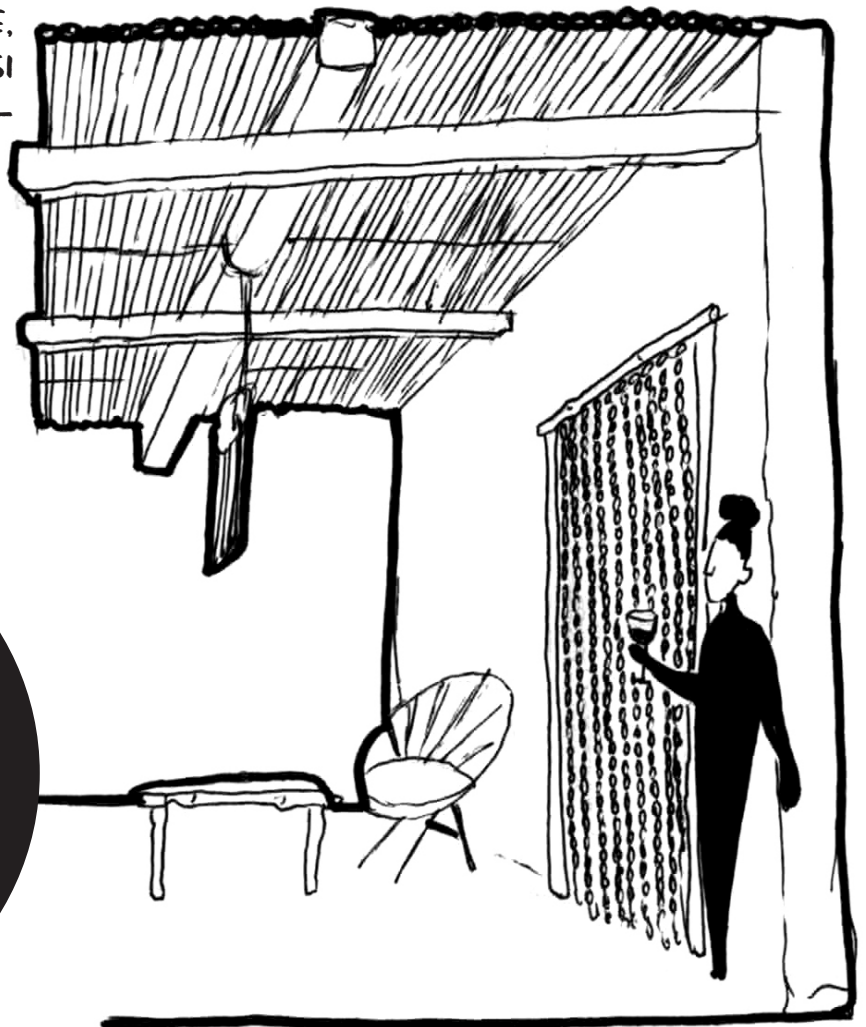
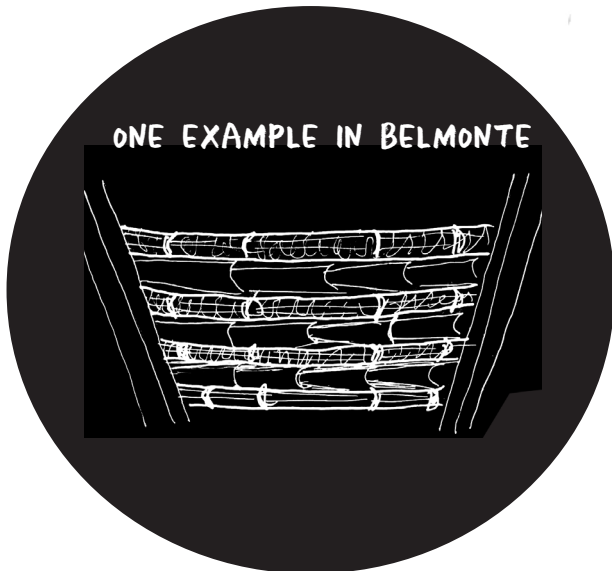
ECO-MUSEO
delle
ERBE PALUSTRI
belmonte

“

LA CANNA PALUSTRE È UNA RISORSA VELOCEMENTE RINNOVABILE CHE CRESCE IN GRANDE QUANTITÀ OGNI ANNO. LA CATENA DI PRODUZIONE È MOLTO CORTA. INOLTRE LE CANNE VENGONO LEGATE QUASI SEMPRE CON FILO DI FERRO, CON UN INCIDENZA MINIMA SUL PRODOTTO FINITO. L'INCIDENZA ENERGETICA TOTALE È QUINDI ESTREMAMENTE RIDOTTA. SI TRATTA DI UN PRODOTTO ATOSSICO, NON DANNOSO ALLA SALUTE E ALL'AMBIENTE. NON COMPORTA IMPATTO AMBIENTALE PER IL REPERIMENTO DELLA MATERIA PRIMA E NELLA LAVORAZIONE NON PREVEDE IMPIEGO DI PRODOTTI CHIMICI O COLLANTI DI ORIGINE SINTETICA.

IL RIUTILIZZO DEI PANNELLI ISOLANTI È POSSIBILE SENZA RISERVE, MA LA DEPOSIZIONE E PULIZIA DEI PANNELLI DEVE AVVENIRE CON CURA E, A VOLTE, POTREBBE ESSERE TROPPO COSTOSA. SI TRATTA DI UN MATERIALE BIODEGRADABILE CHE PUÒ ESSERE INCENERITO. ELIMINATO IL FILO DI FERRO, I RESIDUI POSSONO ESSERE COMPOSTATI.

”



TEXTURE



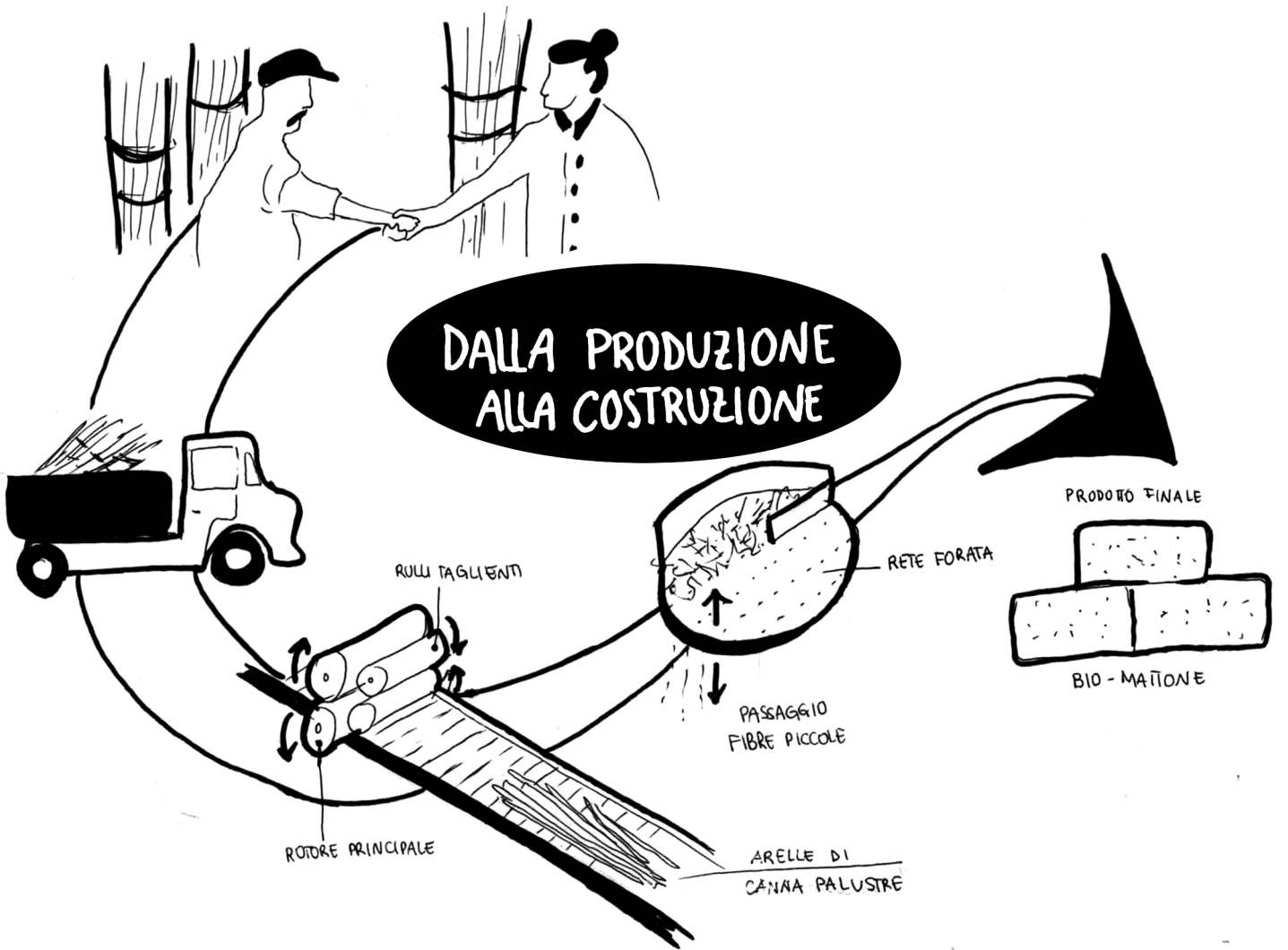
“

ENTRE TERRE ET MER
TRA TERRA E MARE
BETWEEN EARTH

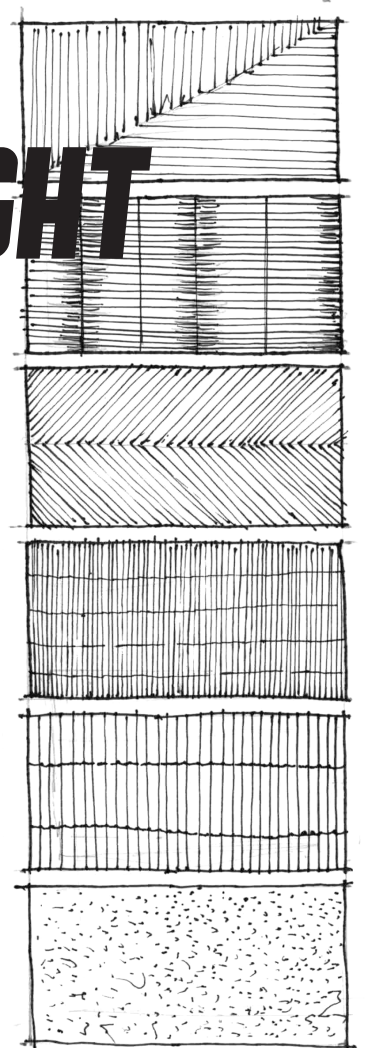
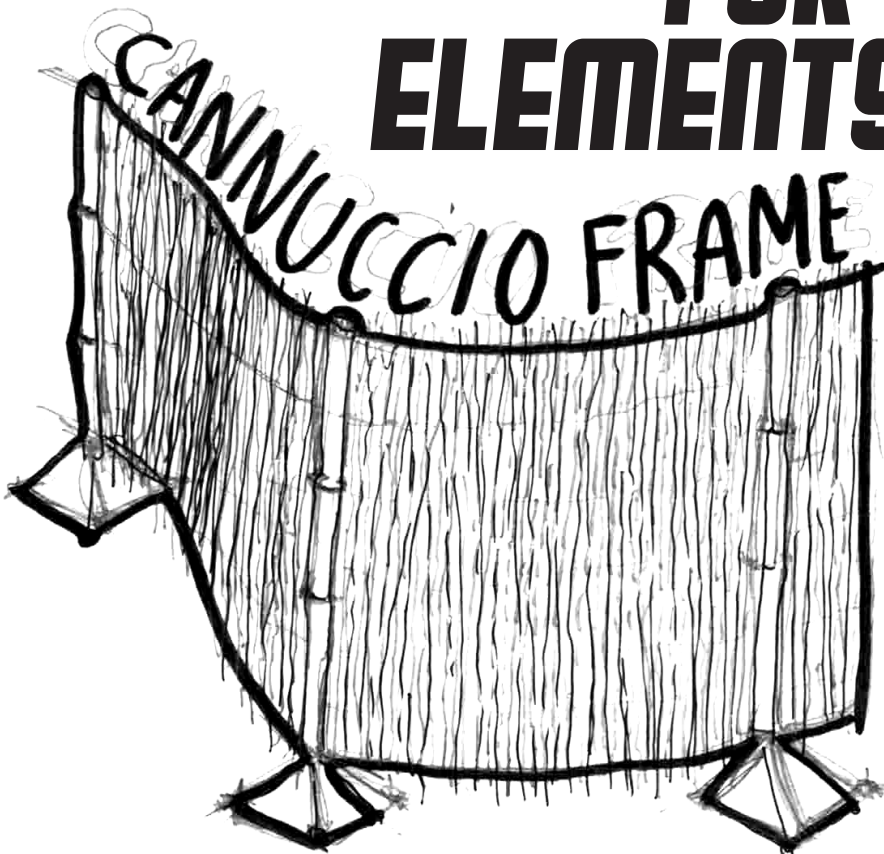
”



**BIO
COSTRU
ZIONE**



A MATERIAL FOR LIGHT ELEMENTS



CASA DI BELMONDO, UNA HISTORIA DEL MARMO

ONCE UPON A TIME, BELMONTE CALABRO WAS FAMOUS FOR ITS PRECIOUS GREEN MARBLE WHICH STILL COVERS MOST OF ITS STREETS IN THE HEART OF THE OLD TOWN.

A STORY SAID THAT IN OLD TIMES, THE QUARRY WAS LOCATED WHERE WE NOW HAVE THE EX-CONVENTO FOUNDATION.

A LOCATION THAT ALWAYS HOSTS TREASURES FOR ITS VILLAGE. THE CULTURAL ASSOCIATION OFFERING VARIOUS SOCIAL & CULTURAL EVENTS...

ONE OF OUR FAVORITE PROJECTS IS "MUSIC GROWERS" GASTROPHONIC RESISTANCE.

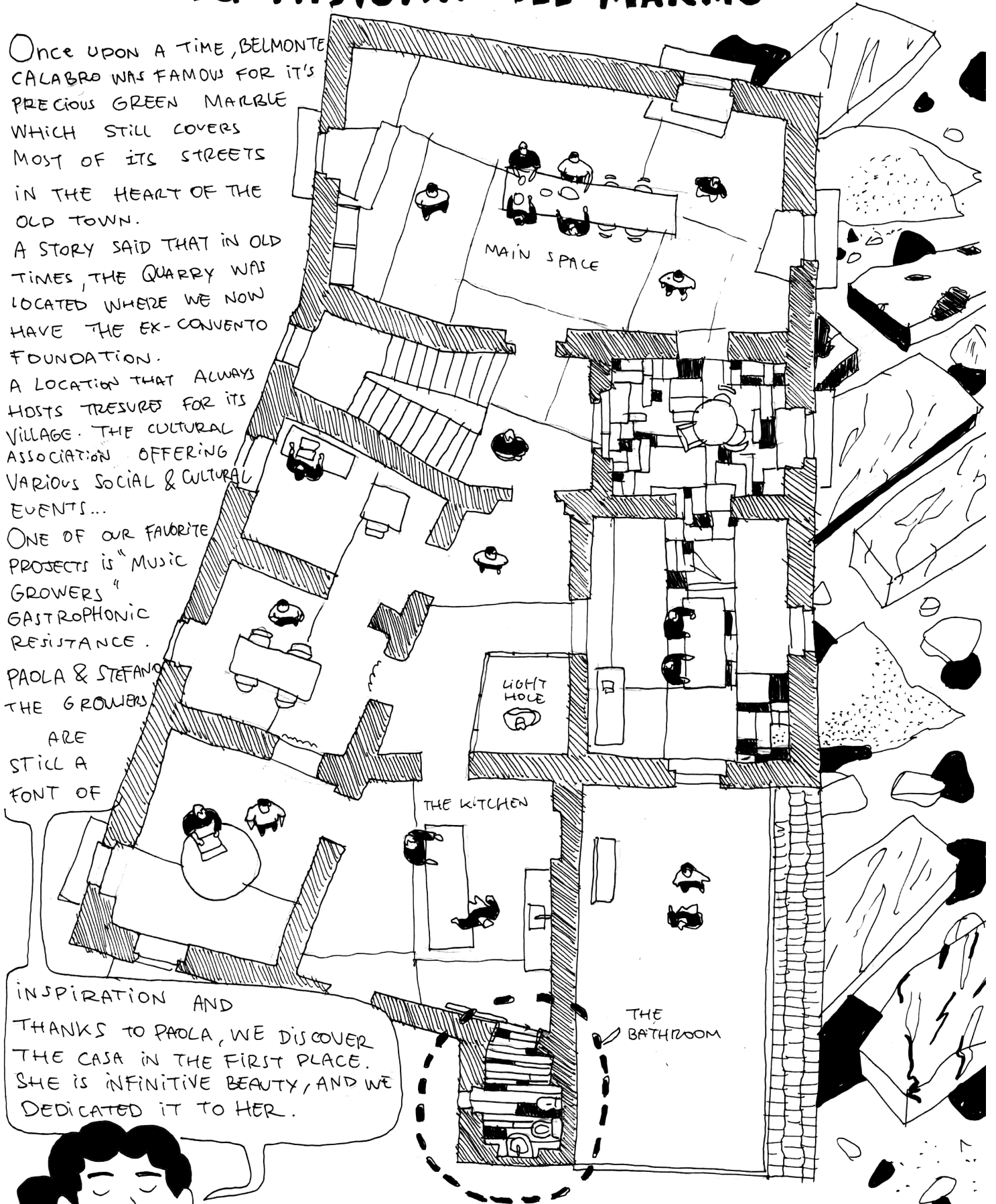
PAOLA & STEFANO THE GROWERS

ARE STILL A FONT OF

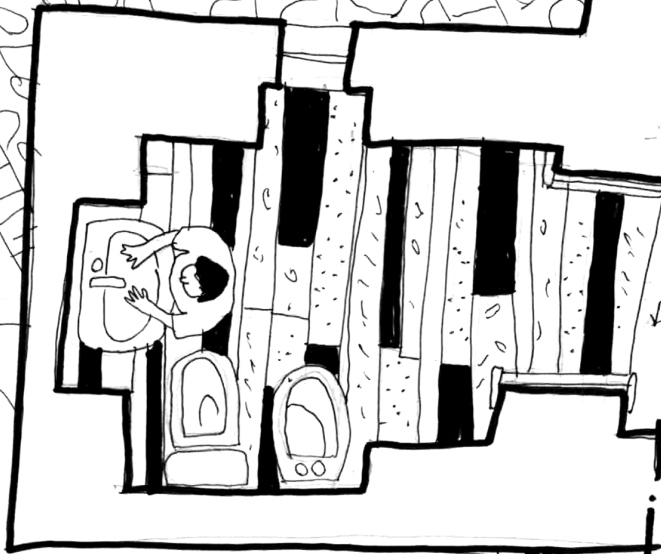
INSPIRATION AND THANKS TO PAOLA, WE DISCOVER THE CASA IN THE FIRST PLACE. SHE IS INFINITIVE BEAUTY, AND WE DEDICATED IT TO HER.



“RITA - CO-FOUNDER OF LA ADEMO RIVOLUZIONE DELLE SEPIE!”



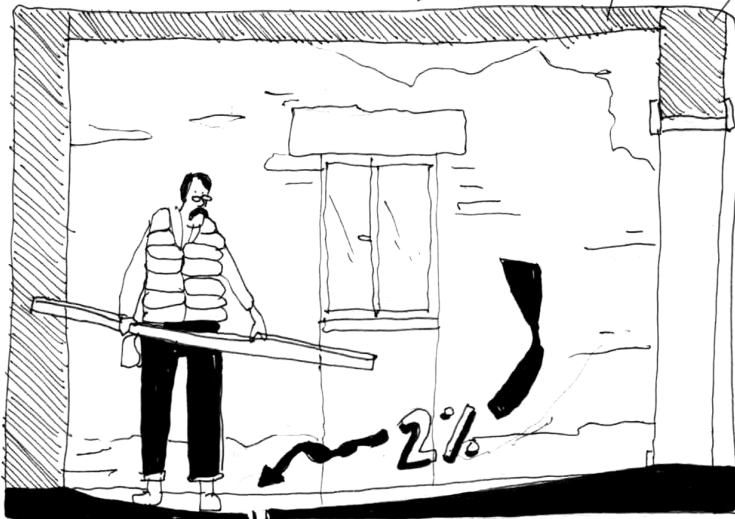
"quon Marble"



TOOLS!

I'M A PREVIOUS STUDENT OF THE CASA WHEN IT WAS A SCHOOL, AS THE CONTRACTOR CARPENTER, TILER AND THE PERSON WHO'S GOING TO MANAGING THE RENOVATION HAPPENING IN JANUARY 2023!!

FIRST STEP,



FRANCO,
L'ARTIGIANO
CANTIERE
DOMESTICO

SECOND STEP,

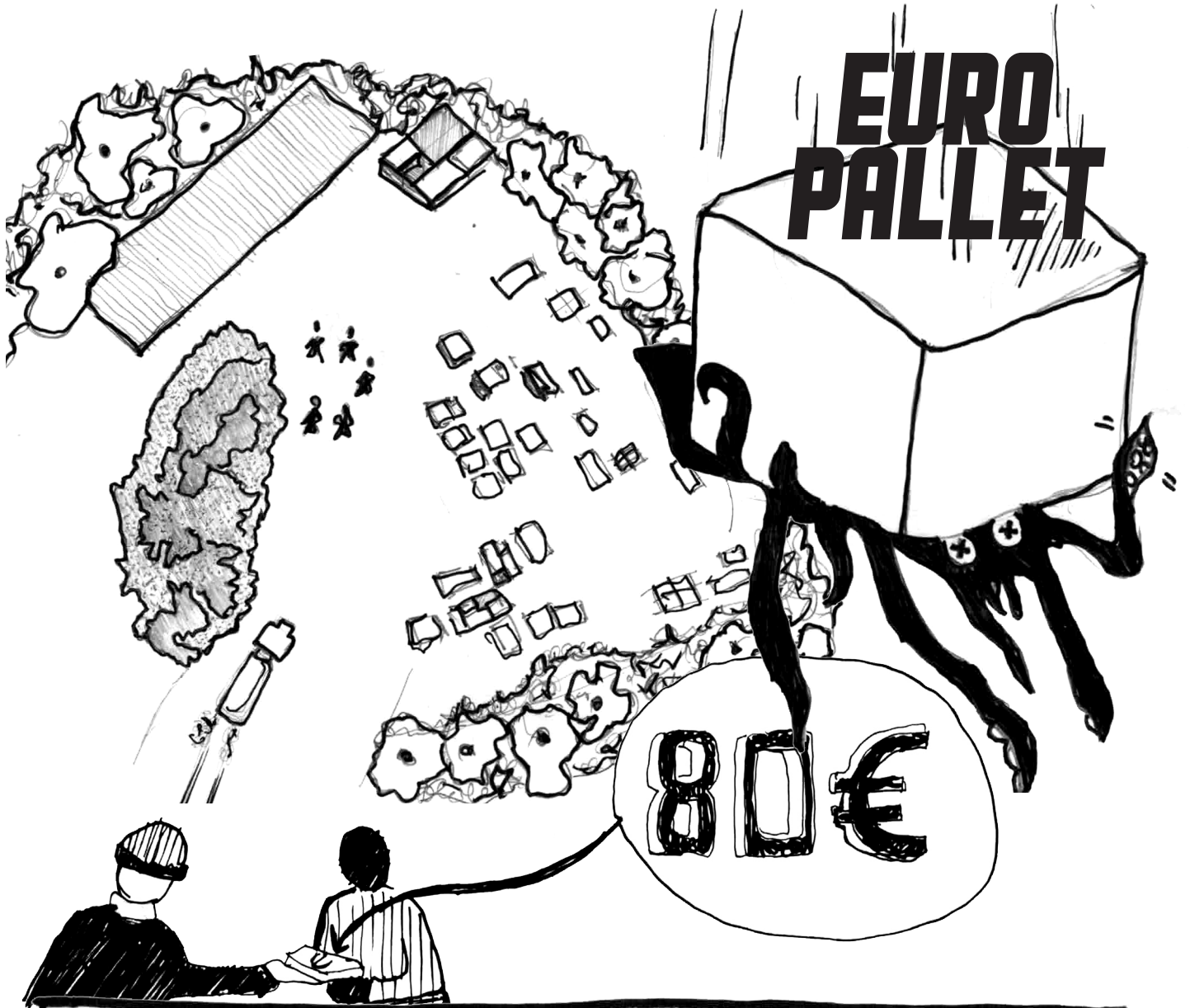


GIUSEPPE GRANT

CANTIERE DOMESTICO: INHABITING THE CONSTRUCTION SITE TO GENERATE A VERY STRONG BOND WITH THE SPACE UNDER CONSTRUCTION & ACCELERATE THE RELATIONSHIP BETWEEN THE PEOPLE WHO BUILD & INHABIT IT. THE SPACE IS INHABITED IN THE SAME INSTANT IN WHICH IT IS BUILT & THEREFORE, THE RELATIONSHIP WITH THE GROWTH OF THE SPACE BECOMES A PERSONAL OR RATHER INTERPERSONAL EXERCISE ...

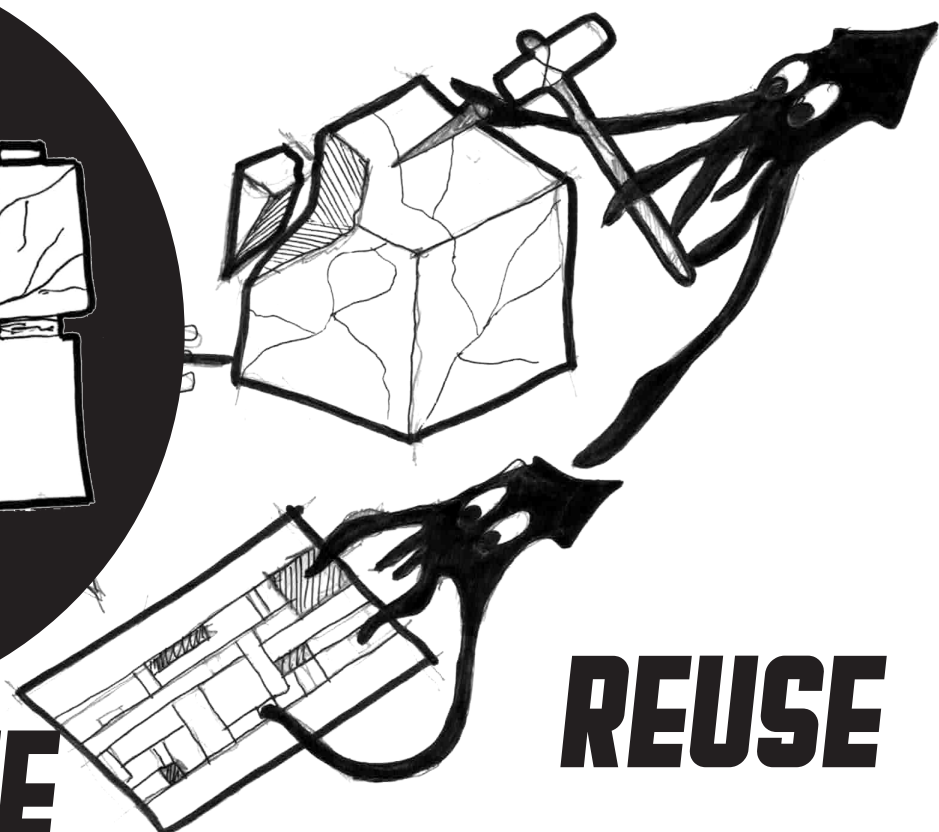
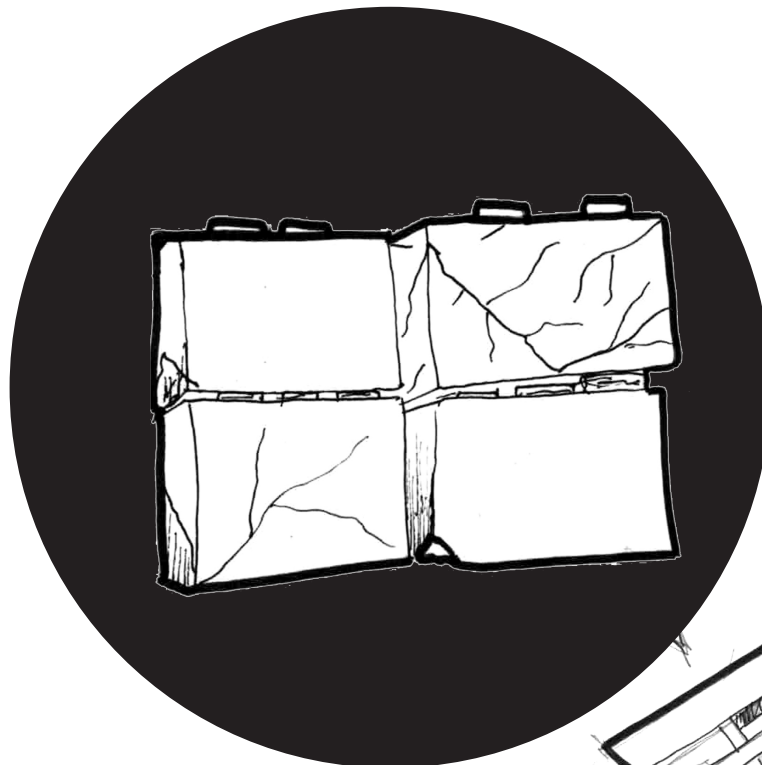


EURO PALLET



CAREER



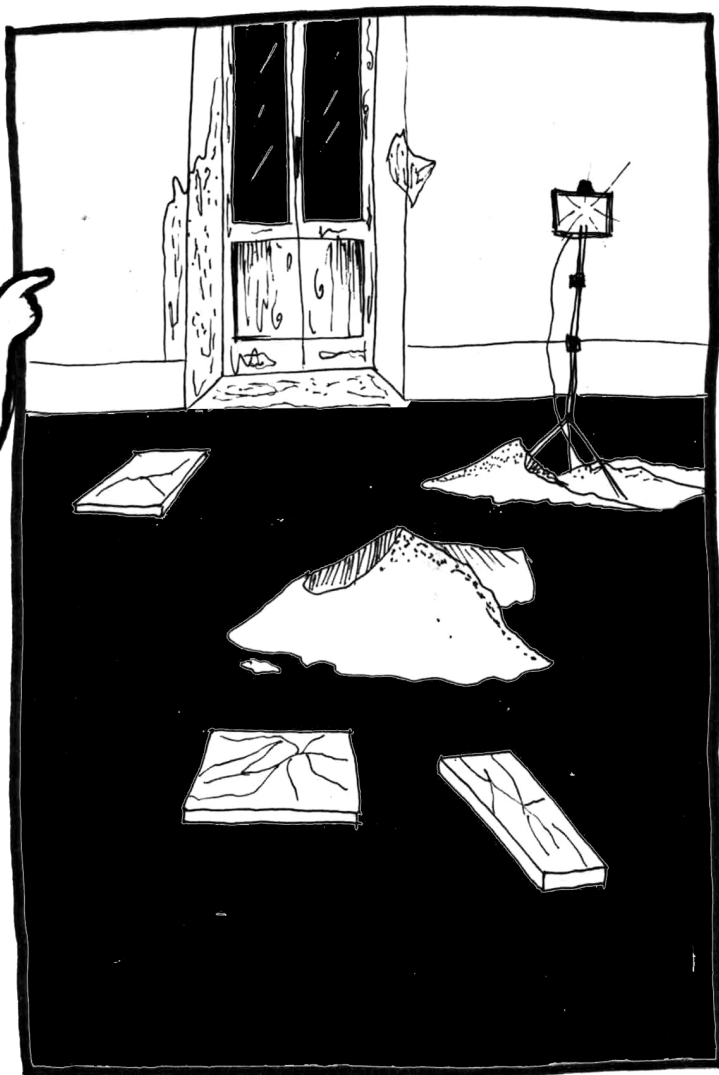


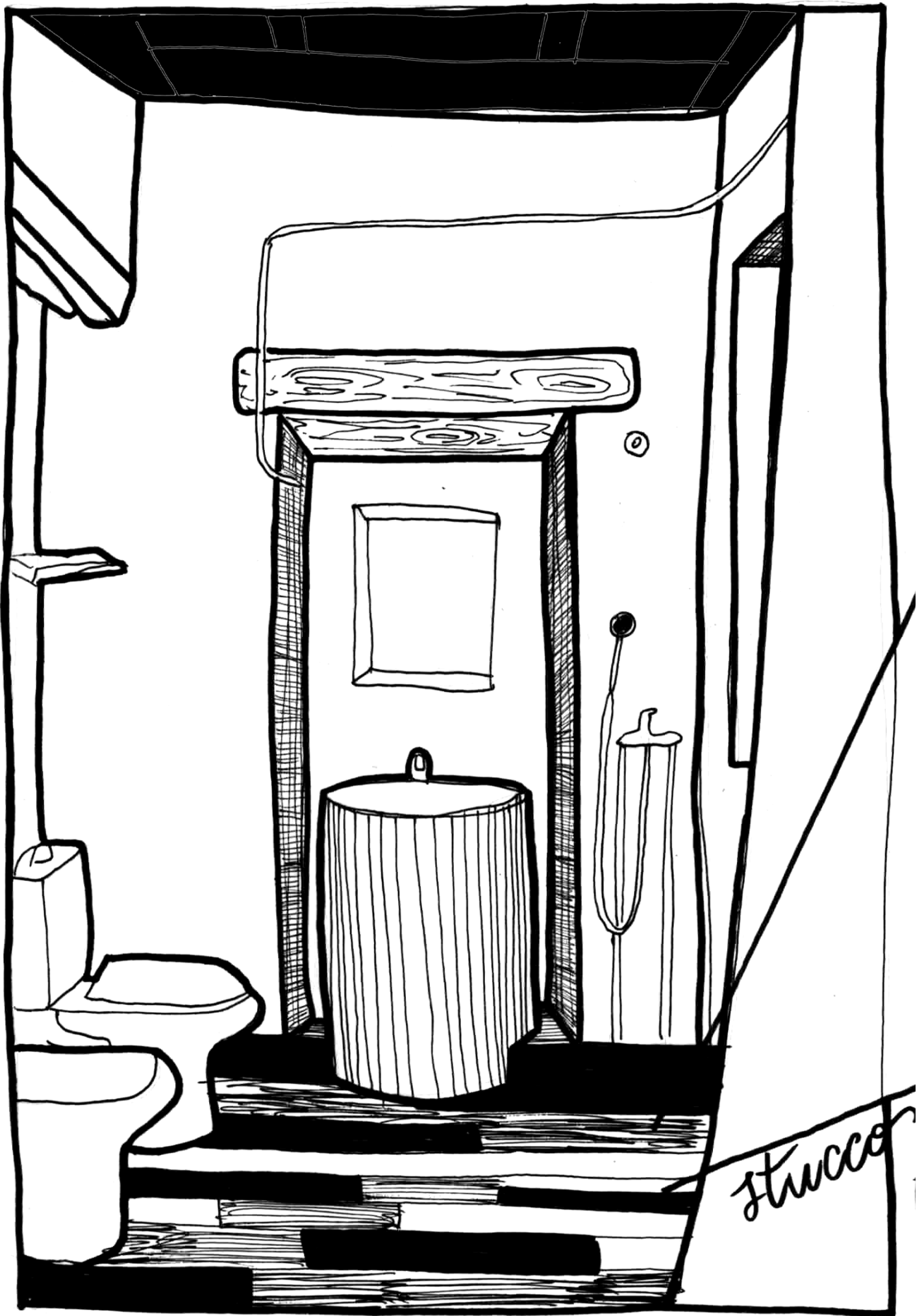
NO WASTE

REUSE



**ITALIANO
MARMO**



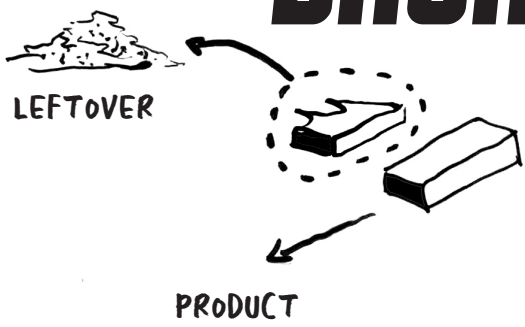




with ceramic fragments & powders



BRINGING MARMO BACK



ON SITE CRAFTING

PLASTER

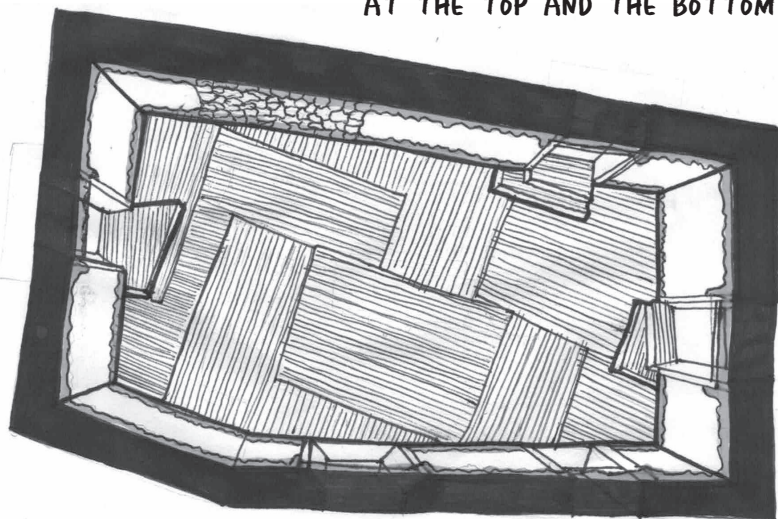
FOR CASA DI BELMONDO.

HOW TO RESTORE SOME
PART OF THE WALLS ?

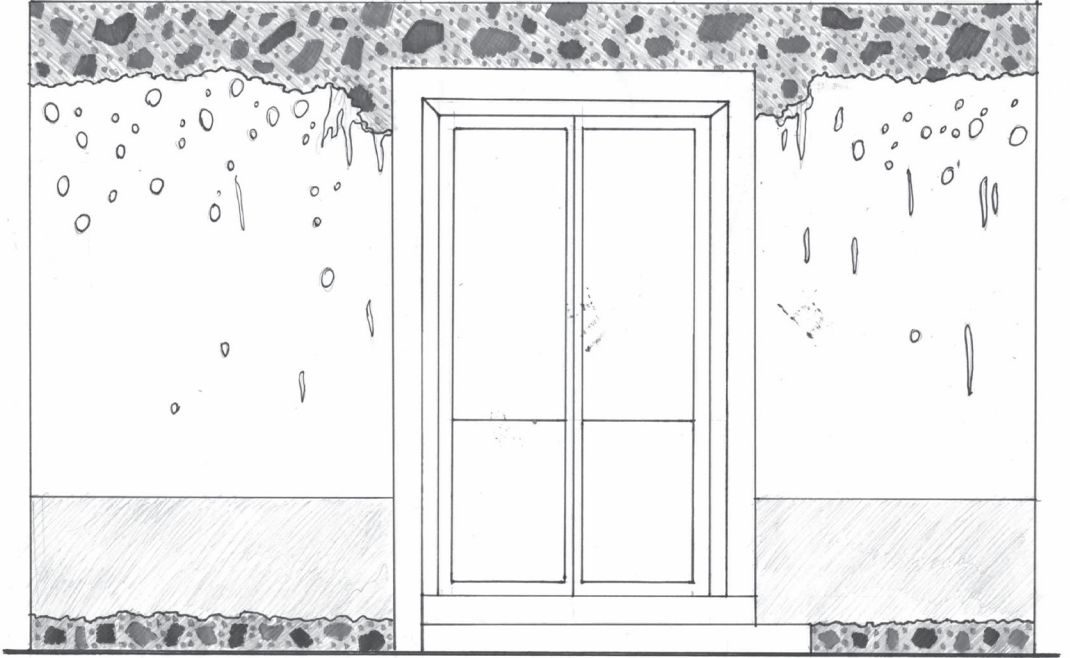


PERSPECTIVE PLAN - MAIN ROOM CASA BELMONDO

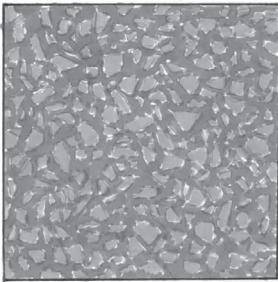
LIGHT INTERVENTION
AT THE TOP AND THE BOTTOM OF THE WALLS.



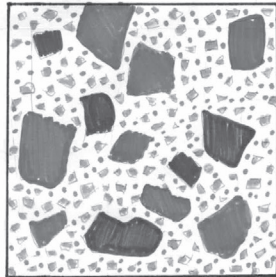
ELEVATION - PROPOSITION FOR CASA BELMONDO



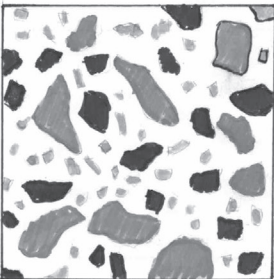
VARIOUS POSSIBILITIES OF MATERIALS



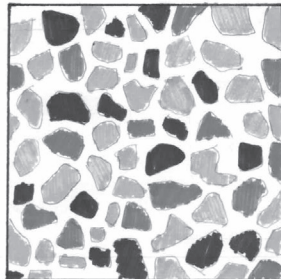
A



B



C



D

CANNA DI FIUME

FOR CASA DI BELMONDO.

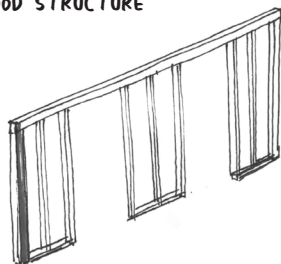
HOW TO CREATE NEW SPACES FOR THE CASA ?



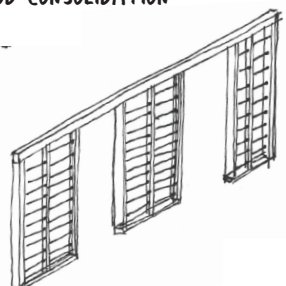
LIGHT WALLS AND SLIDING DOORS FOR THE NEW WARDROBE OF THE WORKSHOP ROOM

PLAN - VARIOUS INTERVENTIONS ON THE 2ND FLOOR

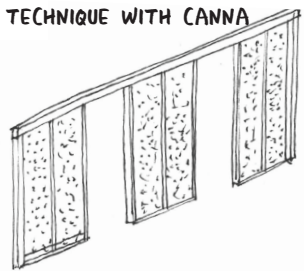
01 - WOOD STRUCTURE



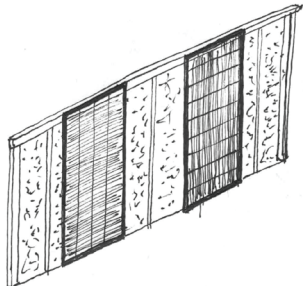
02 - WOOD CONSOLIDATION



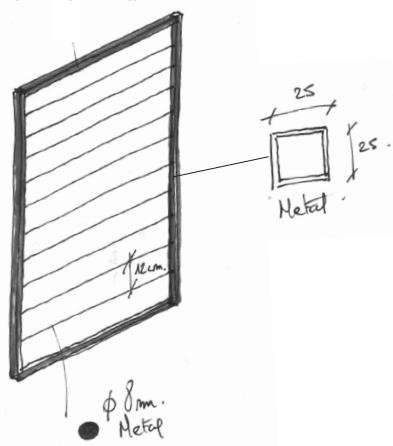
03 - COB TECHNIQUE WITH CANNA



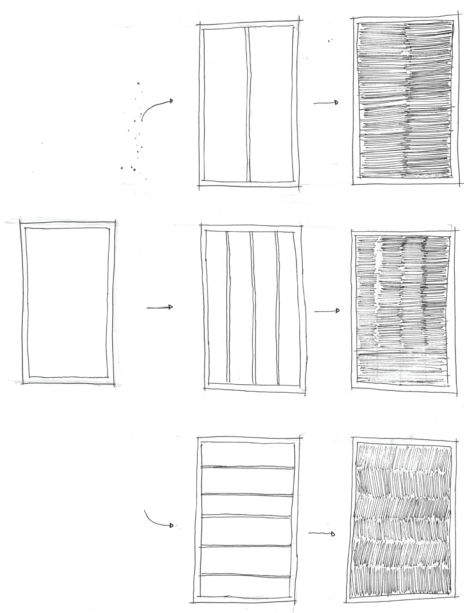
04 - LIGHT SLIDING DOORS IN CANNA



PANEL DETAIL METAL FRAME



VARIOUS TYPOLOGIES OF PANELS

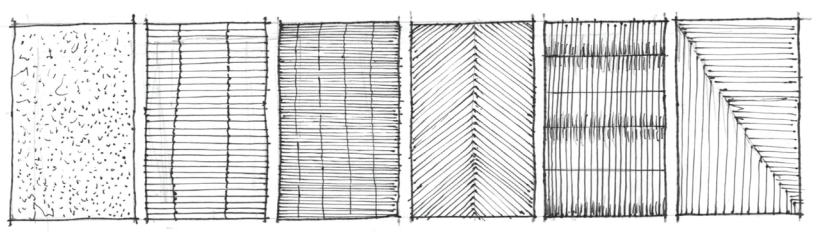


01 - METAL FRAME

02 - METAL REINFORCEMENT

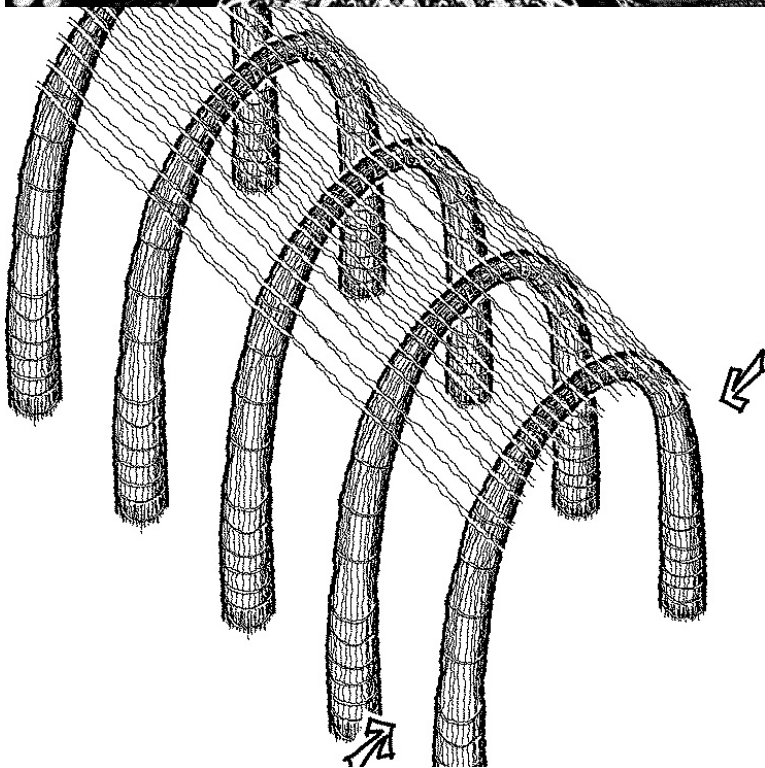
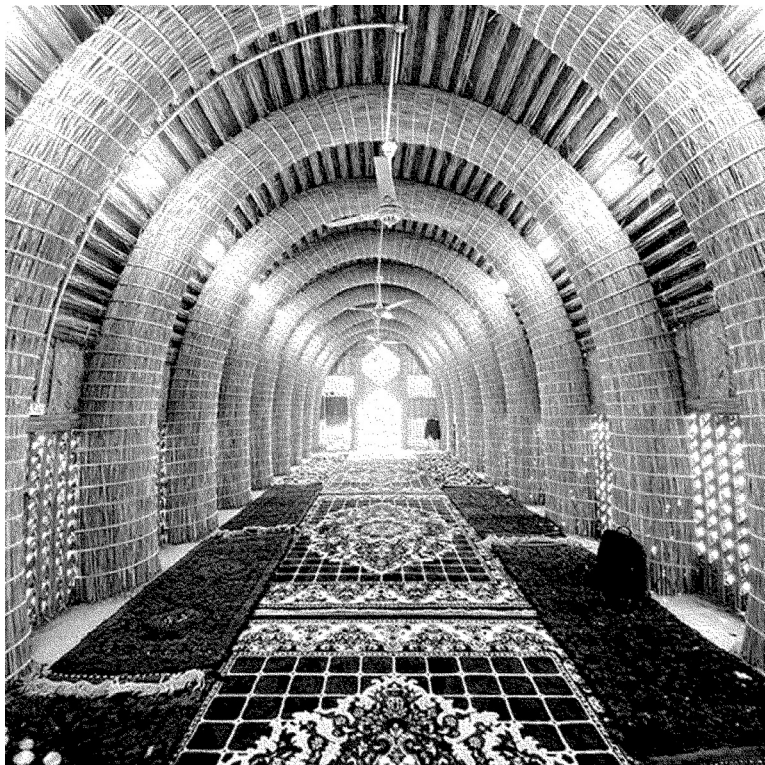
03 - CANNA VIMINI

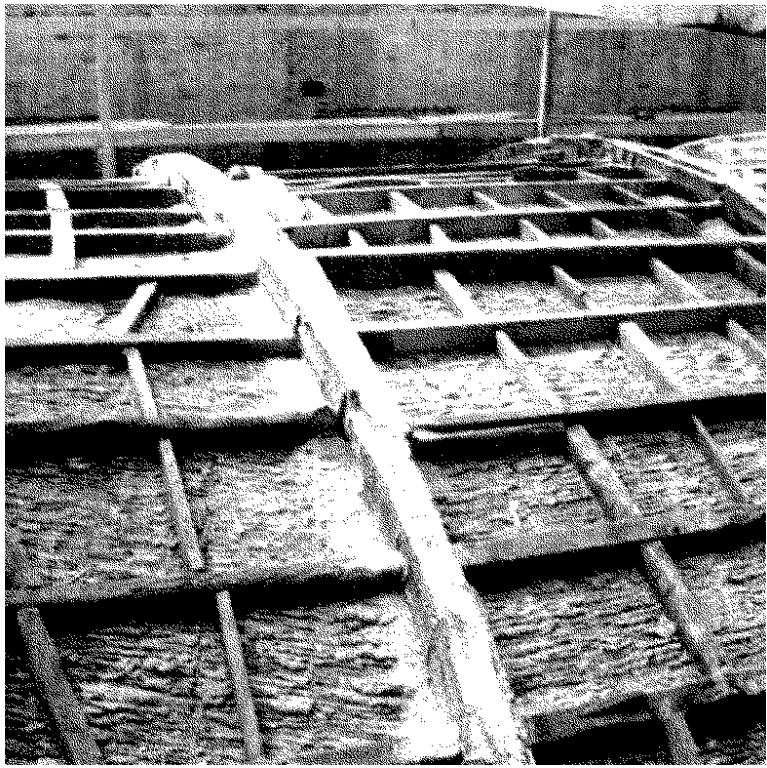
VARIOUS PATERNS FOR THE LIGHT CANNA PANELS



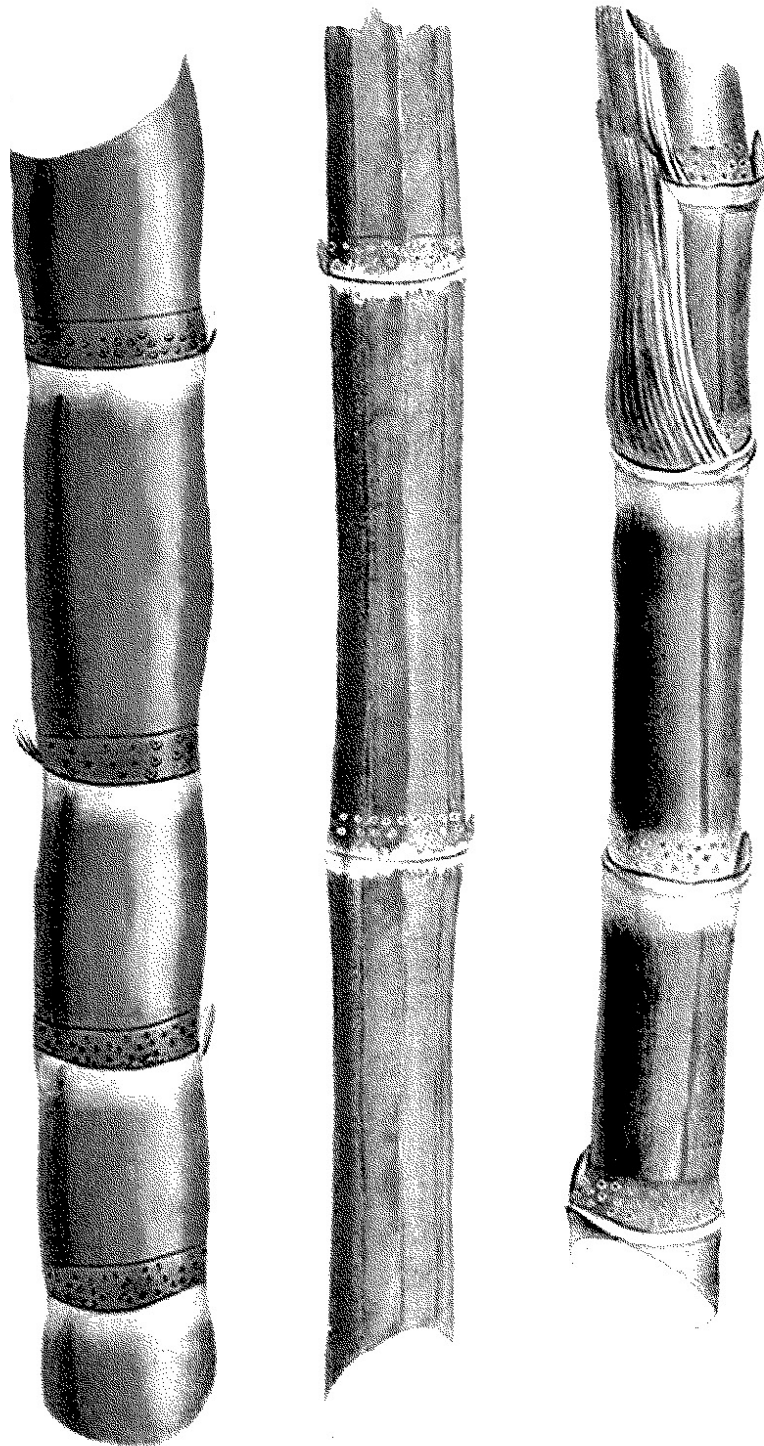


FIBRE

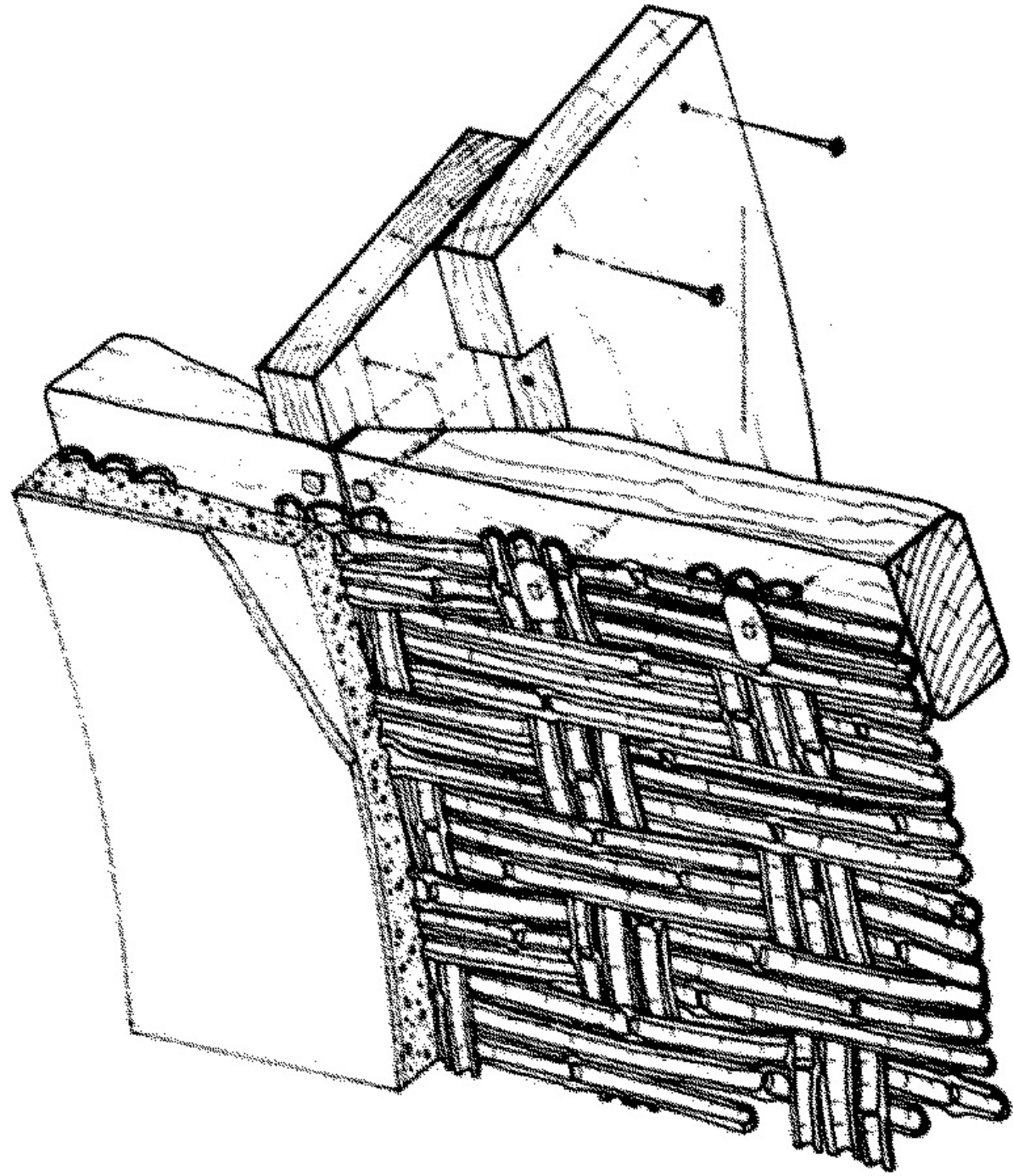




CASA TEJIDA, ZULOARK









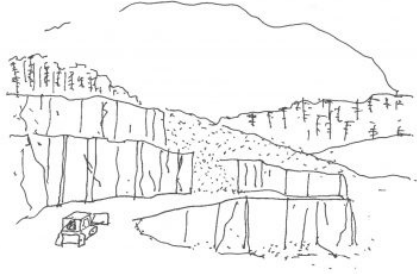
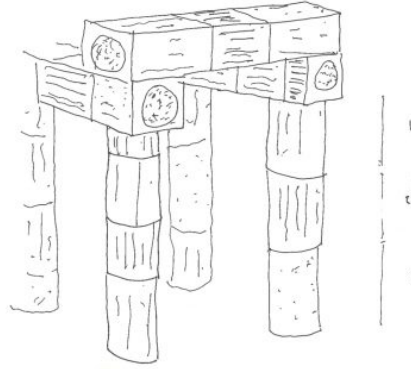
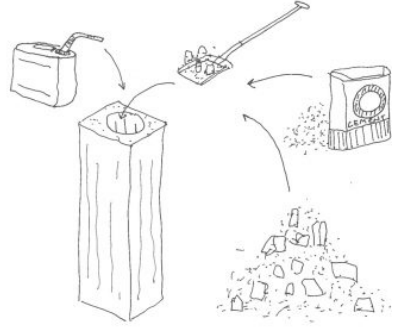
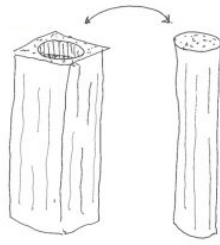
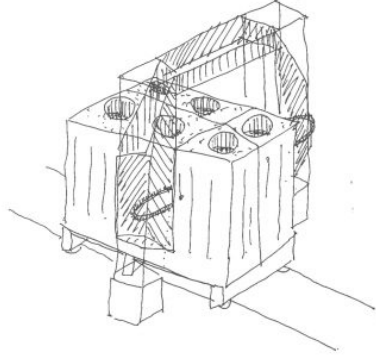
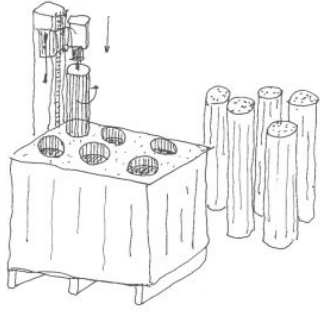




A black and white halftone photograph of a stone wall. The wall is composed of irregularly shaped stones of various sizes and shades of gray, set in a light-colored mortar. The texture is highly detailed due to the halftone dot pattern. The word "PIETRE" is overlaid in the center of the image in a large, bold, white, sans-serif font. The letters are solid white and stand out prominently against the textured background. The word is positioned horizontally across the middle of the frame.

PIETRE

ASSEMBLE, LUMA ARLES



Types of stone finishing employed by Calabrian stonemasons can be resumed in: "rock faced"; "rough-pointed"; "rough-pointed with chiseled margin"; "furrowed surface"; "bush hammered".

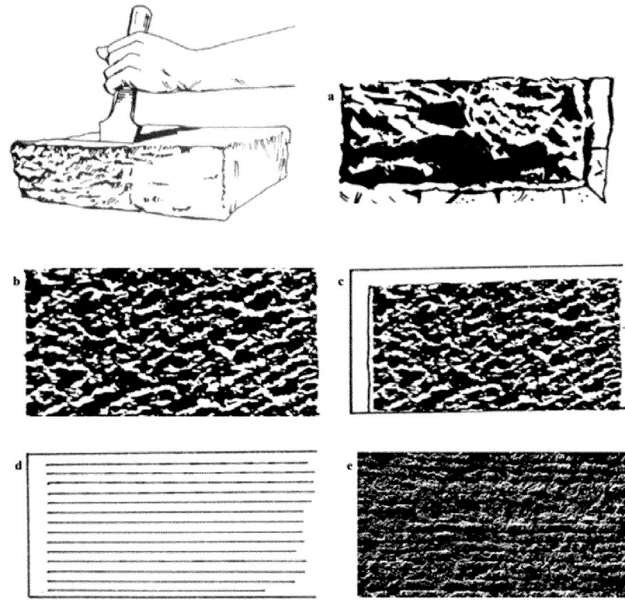
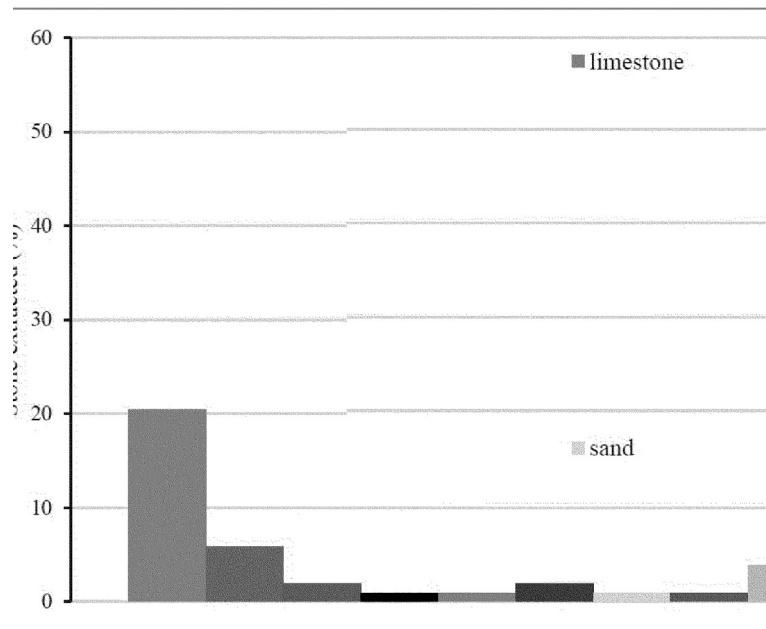
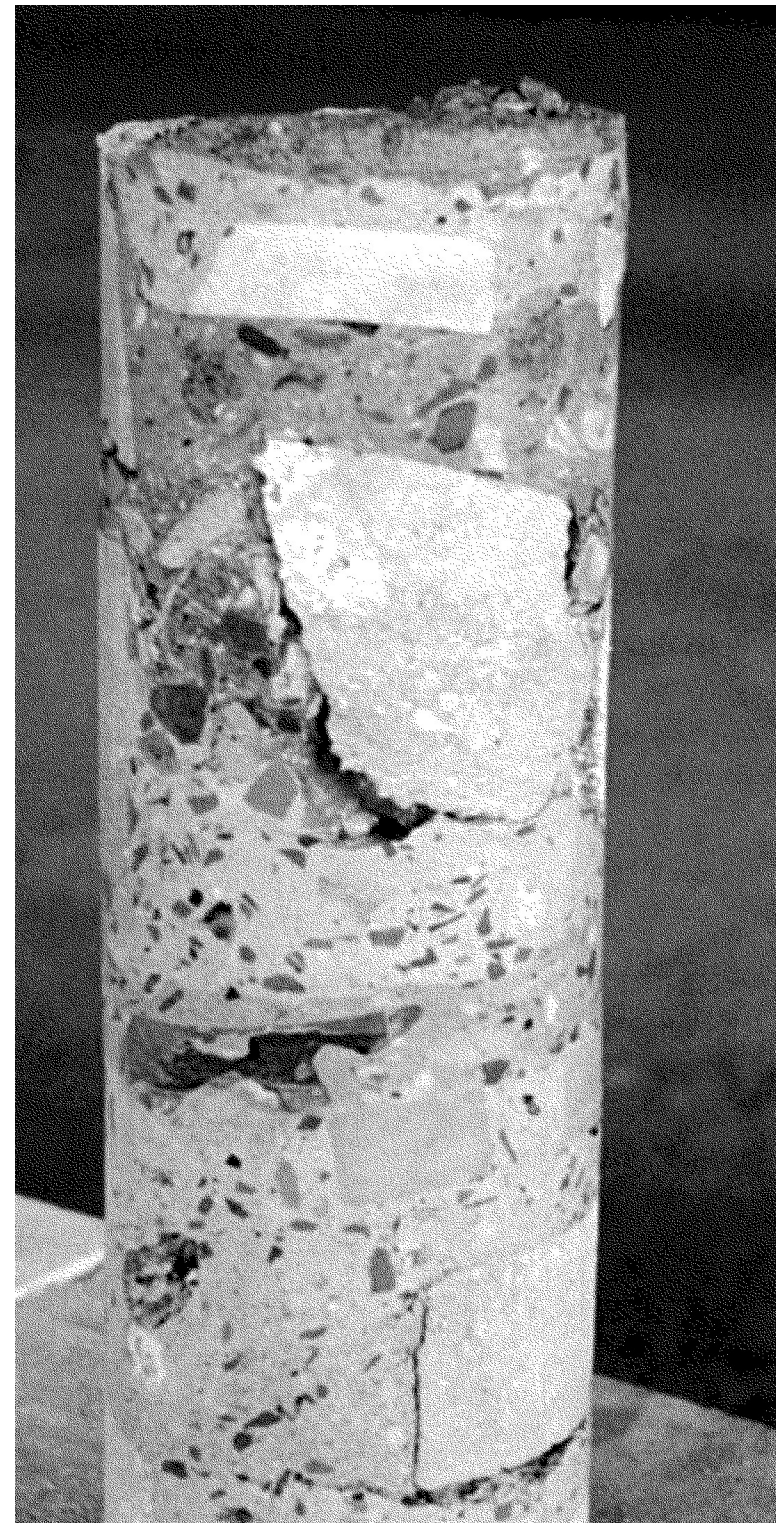
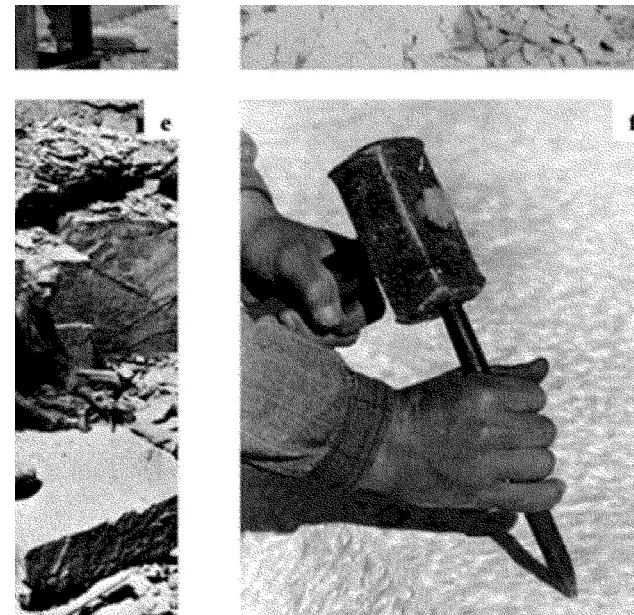
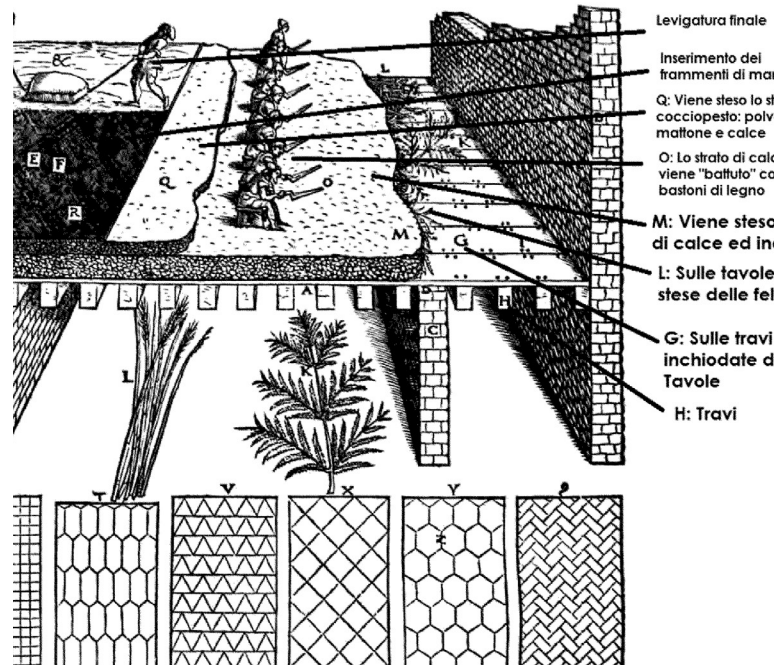


Fig. 3.34. Types of stone finishing employed by stonemasons of Cosenza Province: "rock faced" (a); "rough pointed" (b); "rough pointed with chiseled margin" (c); "furrowed surface" (d); "bush-hammered" (e).



aterials extracted (%) in Cosenza Province. (Laboritt, 2014, modified).

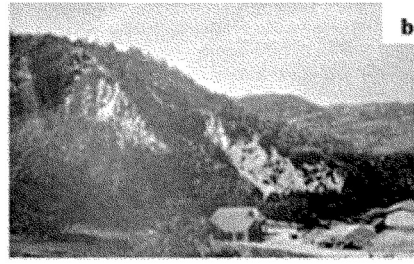
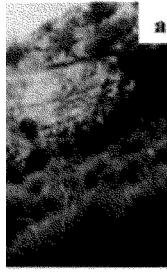
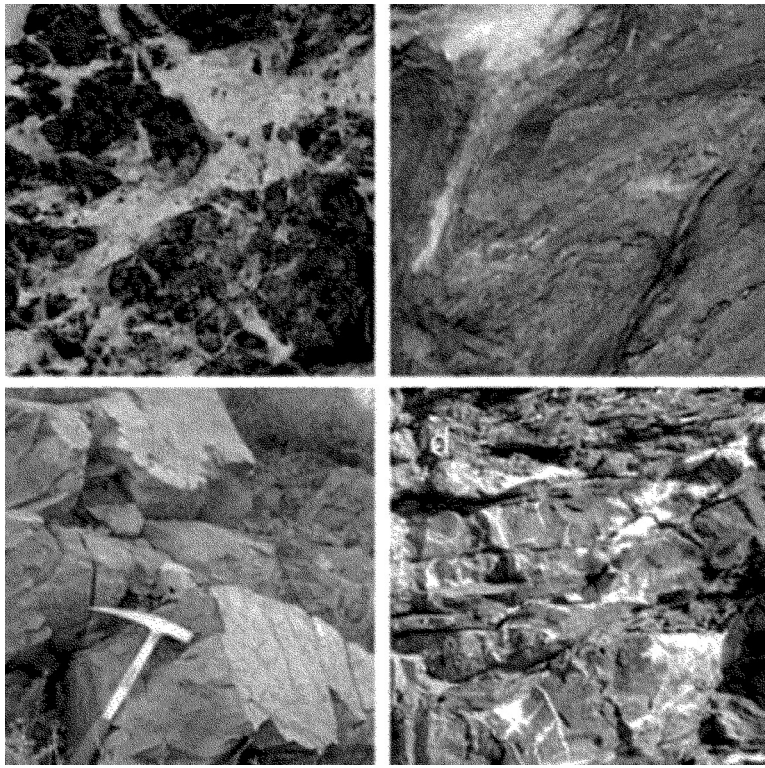
ioni di un terrazzo alla veneziana su solaio ligneo. da "Rusconi G.A. - Della Architettura,



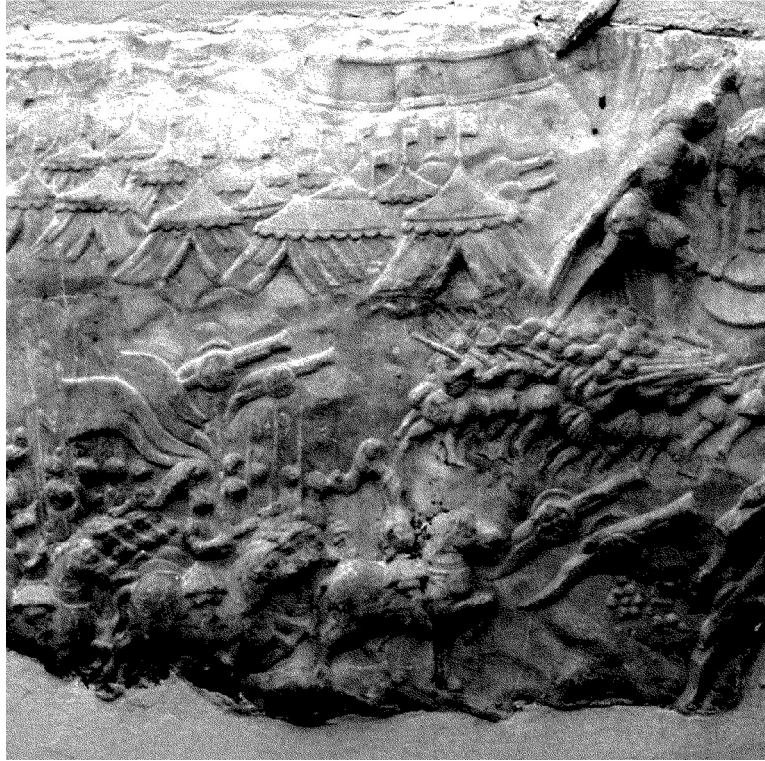
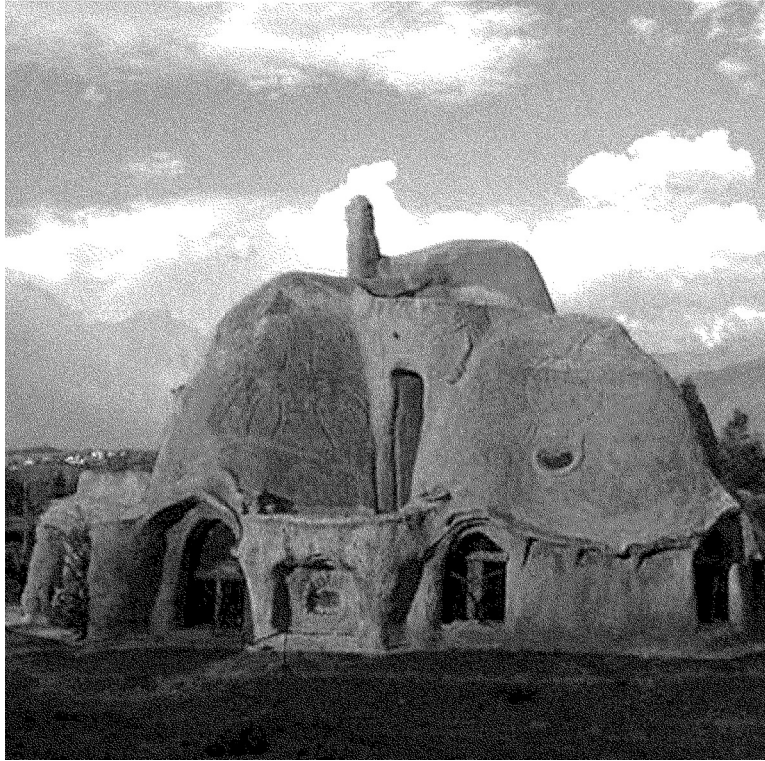
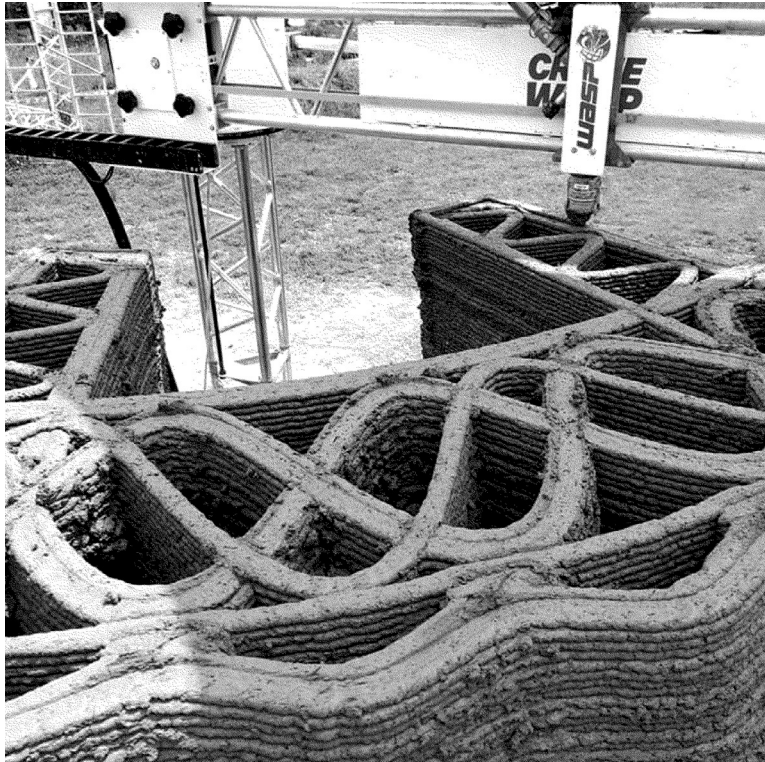
quarries of San Lucido stone in Mendicino (a) and Altilia (b) [Lico, 2015]. Tradition of terrazzo (c, d, e, f) [AA.VV., 2015].



BÉTON DE PLÂTRE, CIGÜE ARCHITECTES



MARBRE D'ICI, STEFAN SHANKLAND



GRANBY WORKSHOP, ASSEMBLE





